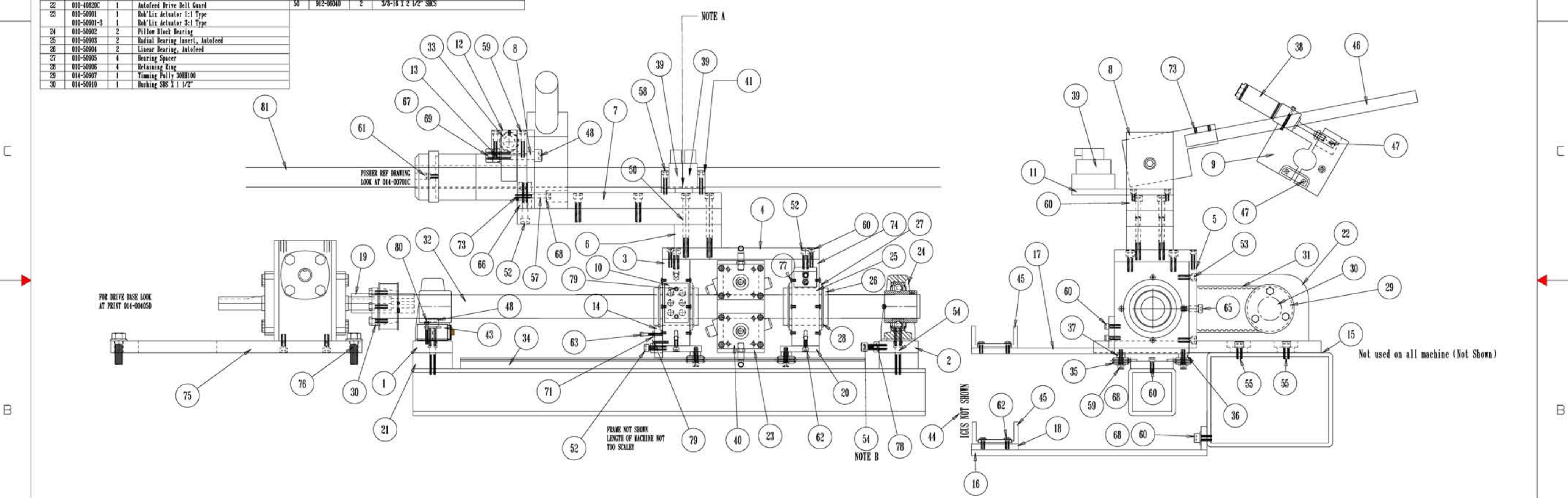


Item	DWG/Part#	EQY	DESCRIPTION	Item	DWG/Part#	EQY	DESCRIPTION	Item	DWG/Part#	EQY	DESCRIPTION
1	010-30901F-0	1	Front Autofeed Support Bracket	31	010-50911	1	Gearbell, 220R100 TYPE	71	913-0310N	1	10-32 Hex Nut
2	010-30901B	1	Back Autofeed Support Bracket	32	010-50910	1	1 1/2" DIA Hardened Shaft 84", 114", & 144"	72	917-04004	2	1/4-20 X 1/4" Socket Head Set Screw
3	010-30920C	1	Bearing Mount - Left	33	010-50915	1	Linear Bearing, AF Link Arm	73	917-03006	3	10-32 X 3/8" Socket Head Set Screw
4	010-30904B	1	Top Plate, Autofeed	34	010-50919	1	"V" Rail Assy. 75", 105", & 135"	74	010-30921C	1	Bearing Block, Right
5	010-30905B	1	Back Plate, Autofeed	35	010-50920	4	"V" Wheels	75	010-30420C	1	Drive Base Plate
6	010-30907B	1	Horz. Arm Spacer, Autofeed	36	010-50921	2	Bushing for "V" Wheels	76	917-08024	3	1/2-13 X 1 1/2" Hex Head Flang Bolts
7	010-30920C	1	Horizontal Arm, Autofeed	37	010-50922	2	Esces, Bushing for "V" Wheels	77	914-03004	VAR	10-32 X 1/4" BRCS
8	010-30909A	1	Vertical Arm - Long Style	38	010-60901	1	Wandrel Clamp Cylinder	78	912-03124	VAR	10-32 X 1 1/2" SBCS
9	010-30925C	1	Wandrel Clamp - Match to Wandrel OD When Ordering	39	010-60903	2	Solenoid Valves	79	912-03116	VAR	10-32 X 1 1/2" SBCS
10	010-30914A	1	Air Manifold - Large	40	010-60904	2	Pancake Type Auto Advance Cylinders	80	912-01024	2	6-32 X 1 1/2" SBCS
11	010-30915A	2	Valve Mount Strap	41	010-60904-2	2	2 Stage Auto Advance Cylinders	81	010-30500-A	1	7/8" Wandrel Shaft
12	010-30916B	1	Pusher Link	42	010-60904-4	2	4 Stage Auto Advance Cylinders	82	010-30500-B	1	1" Wandrel Shaft
13	010-30917A	1	Link Bearing Mount - Autofeed	43	010-60910	SKY	Manifold End Plates, Autofeed	83	010-30500-C	1	1 1/4" Wandrel Shaft
14	010-30919A	1	Carriage Stop - New - Microswitch Above AF Bracket	44	010-60911	1	Isolator Kit - Machine Built After 11/98 DO NOT HAVE THIS!	84	010-30500-D	1	1 1/2" Wandrel Shaft
15	010-30906A	1	Carriage Stop - Old - Microswitch Below AF Bracket	45	010-70901	1	Limit Switch	85	014-50909	1	2" Wandrel Shaft
16	010-30921A	1	Spacer, Autofeed	46	010-70903	1	IGIS Chain - VARS IN LENGTH PER MACHINE	86	014-50909	1	Bushing 2448100536 (NOT SHOWN) SEE ITEM 83
17	010-30924B	2	IGIS Chain Mount, Frame	47	010-70904	SKY	IGIS Chain - VARS IN LENGTH PER MACHINE	87	914-0090R	5	1/2" DIA Flat Washer
18	010-30928A	1	IGIS Chain Mount, Autofeed	48	010-70904	SKY	IGIS Brackets	88	914-0490R	2	1/4" DIA Flat Washer
19	010-30922	1	IGIS Rail - Specify Length Of Machine	49	0061424	1	3/4" Hard Shaft 1 10 1/2" Inches	89	913-0800H	2	1/2-13 Hex Nut
20	010-30460A	1	Reducer Shaft Extension, Drive Base to AF	50	801-1.428	3	Bevel Pins, 1/4" DIA X 1 3/4"	90	913-0600H	1	3/8-16 Hex Nut
21	010-30930A	2	"V" Wheel Mount Plate, Autofeed	51	912-06032	2	3/8-16 X 2 1/2" SBCS	91	912-05016	VAR	5/16-18 X 1 1/2" SBCS
22	010-30935B	2	Riser Blocks	52	912-06132	4	3/8-24 X 2" SBCS	92	912-05016	VAR	3/8-24 X 1 1/2" SBCS
23	010-40820C	1	Autofeed Drive Bell Guard	53	912-06116	VAR	3/8-24 X 1" SBCS	93	912-05014	4	5/16-18 X 7/8" SBCS
24	010-50901	1	Rel'X Actuator 1:1 Type	54	912-04040	1	1/4-20 X 2 1/2" SBCS	94	912-04040	1	1/4-20 X 2 1/2" SBCS
25	010-50901-3	1	Rel'X Actuator 3:1 Type	55	912-04024	6	1/4-20 X 1 1/2" SBCS	95	912-04020	8	1/4-20 X 1 1/4" SBCS
26	010-50902	2	Pillow Block Bearing	56	912-04012	VAR	1/4-20 X 3/4" SBCS	96	912-04008	8	1/4-20 X 1/2" SBCS
27	010-50903	2	Radial Bearing Insert, Autofeed	57	912-04008	6	1/4-20 X 1/2" SBCS	97	912-04006	6	1/4-20 X 1/2" SBCS
28	010-50904	2	Linear Bearing, Autofeed	58	912-03116	5	10-32 X 1 1/2" SBCS	98	912-03116	5	10-32 X 1 1/2" SBCS
29	010-50905	4	Bearing Spacer	59	912-01024	2	6-32 X 1 1/2" SBCS	99	915-00010	1	3/8-16 X 5/8" Shoulder Bolt
30	010-50906	4	Relaxing Ring	60	801-1.432	2	Bevel Pin - 1/4" DIA X 2" Length	100	014-50909	1	Bushing 2448100536 (NOT SHOWN) SEE ITEM 83
31	014-50907	1	Timing Pulley 300H100	61	912-01024	1	Isolator Kit - Machine Built After 11/98 DO NOT HAVE THIS!	101	014-50909	1	Bushing 2448100536 (NOT SHOWN) SEE ITEM 83
32	014-50910	1	Bushing SBCS 1 X 1/2"	62	801-1.432	2	Bevel Pin - 1/4" DIA X 2" Length	102	014-50909	1	Bushing 2448100536 (NOT SHOWN) SEE ITEM 83

REVISIONS				
ZONE	REV	DESCRIPTION	DATE	APPROVED



NOTE A - MACHINE BUILT BEFORE 10/98 HAVE A ISOLATOR PLATE THIS IS LISTED AS ITEM NUMBER 42
 NOTE B - USED ON MACHINES OVER 90" IN LENGTH.

APPROVALS		DATE	TITLE	
DRAWN	JAH	5/28/09	MODEL 14 AUTOMATIC CORE ADVANCE ASSY. PRINT	
CHECKED				
DESIGNER			SIZE	D
APPROVED			CAGE CODE	
			DWG NO	014-00901D
			SCALE	1/3
			RELEASE DATE	
			WEIGHT	
			SHEET	

CORETECH INTERNATIONAL INC
 41 INDUSTRIAL RD.
 ALPHA NJ 08865
 1-908-454-7999 VOICE
 1-908-454-7998 FAX