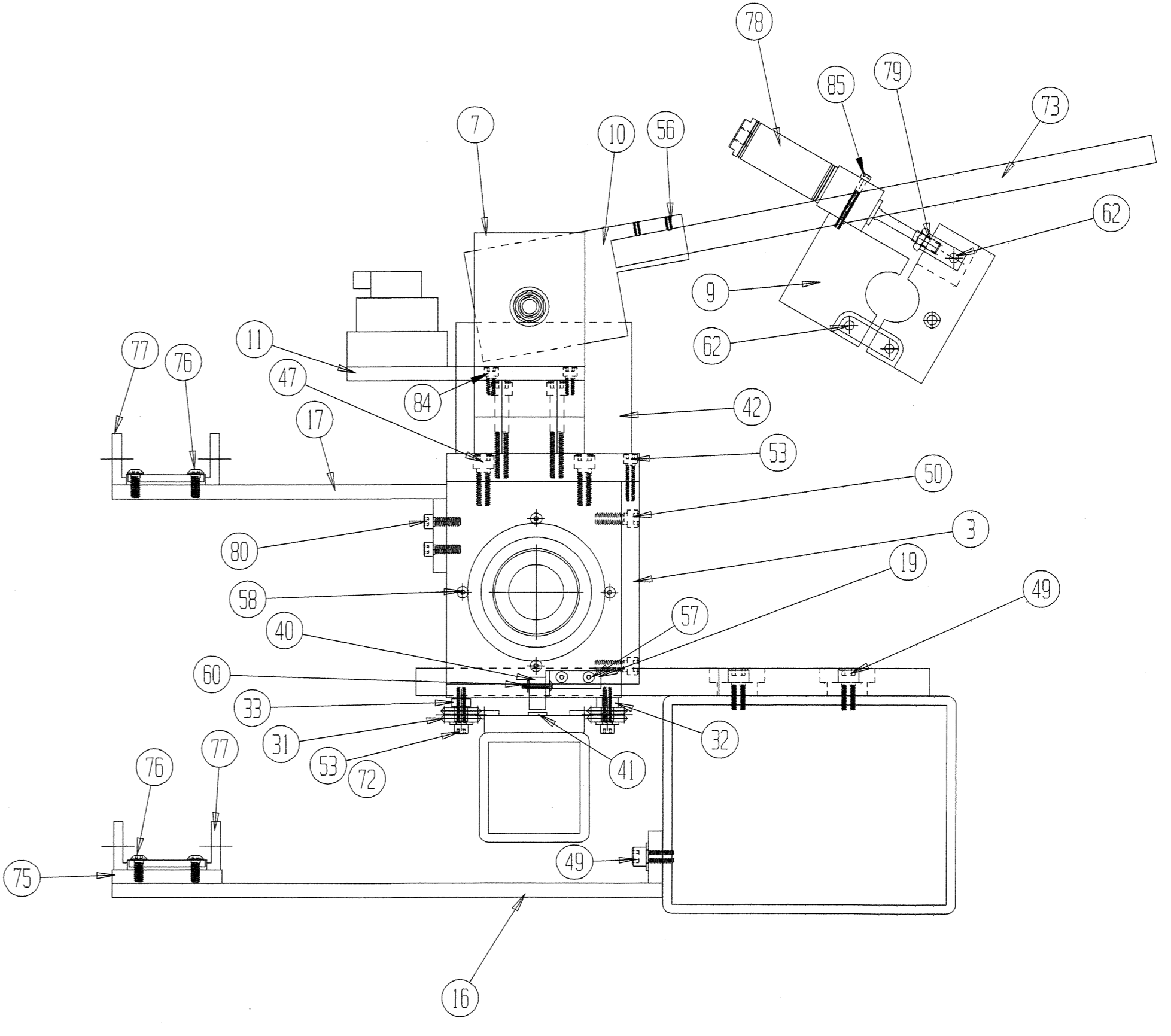
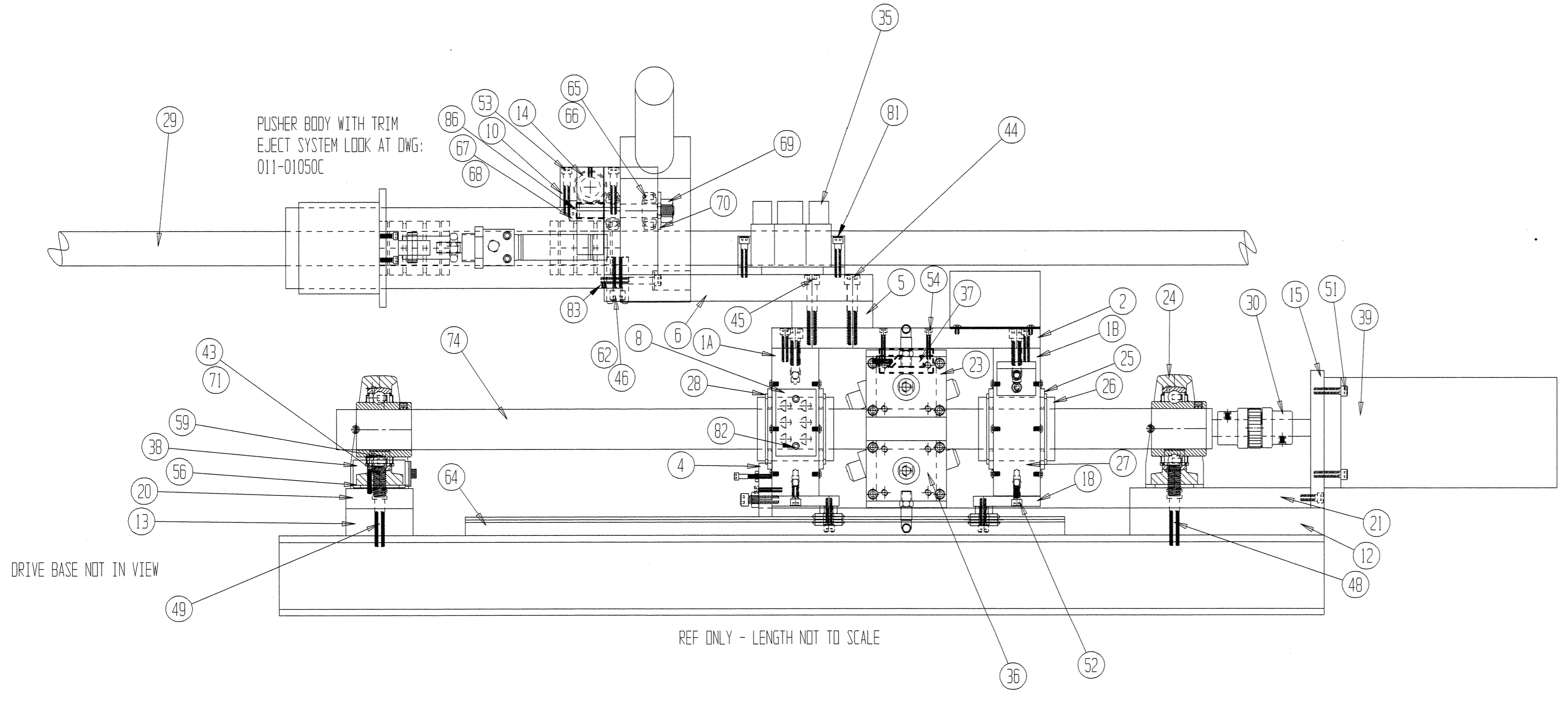


Item	DWG/Part#	REQ	DESCRIPTION	Item	DWG/Part#	REQ	DESCRIPTION	Item	DWG/Part#	REQ	DESCRIPTION
1A	010-30920	1	Bearing Mount	27	010-50905	4	Bearing Spacer	55	010-30917A	1	Pusher Link Bearing Mount
1B	010-30921	1	Bearing Mount	28	010-50906	4	Retaining Ring	56	912-03112	VAR	10-32 X 3/4 SHCS
2	010-30905B	1	Top Plate	29	011-30506-A	1	3/4" Mandrel	57	912-03108	VAR	10-32 X 1/2 SHCS
3	010-30907A	1	Back Plate		011-30506-B	1	1" Mandrel	58	914-03106	32	10-32 X 3/8 BHCS
4	010-30919A	1	Carriage Stop - Above AF Mount		011-30506-C	1	1 1/4" Mandrel	59	912-01006	2	6-32 X 1 1/2 SHCS
	010-30906A	1	Carriage Stop - Below AF Mount	30	011-50911	1	Flex Coupling	60	912-01012	2	6-32 X 3/4 SHCS
5	010-30907A	1	Spacer, Autofeed	31	010-50920	4	"V" Wheels	61	916-04104	4	1/4-20 X 1/4 SHSC
6	010-30908A	1	Horizontal Arm	32	010-50921	2	Bushing, Dual VEE	62	801-1.428	5	1/4" DIA X 1 3/4" LENGTH DOWEL PIN
7	010-30909A	1	Vertical Arm	33	010-50922	2	Bushing, Eccen. Dual Vee	63			
8	010-30914A	1	Manifold Block	34				64	011-40920	1	"V" Rail Assy.
9	010-30913C	1	Mandrel Clamp Block - Specify Bore	35	010-60903	3	Auto-Advance Solenoid	65		2	Cone Bearing, Tinken
10	010-30951B	1	Pusher Link	36	010-60904-2	2	Auto Advance Cylinders, 2 Stage	66		2	Cup Bearing, Tinken
11	010-30915A	2	Valve Mount Strap		010-60904-4	2	Auto Advance Cylinders, 4 Stage	67	915-10048	1	5/8 X 3" Shoulder Bolt
12	011-30920B	1	Rear Spacer, Autofeed	37	010-50923	1	Slide Gibb	68		1	5/8 10 X 7/8 DD X 1 OILITE Bushing
13	011-30921	1	Front Spacer, Autofeed	38	010-70901	1	Limit Switch	69	913-080HN	1	1/2-13 Lock Nut
14	010-50915	1	LM-12 Linear Bearing	39	011-70927	1	AB/Reliance Servo Motor	70	91W-08LWR	1	1/2 EXTRA LARGE WASHER
15	011-70929	1	AB/Reliance Servo Mount	40	010-70931	1	Sony Reader Head	71	91W-08WHR	4	1/2 Washer
16	011-30924B	2	IGUS Chain Mount, Frame		010-70931-S	1	Siko Reader Head	72	91W-04WHR	4	1/4 Washer
17	011-30926B	1	IGUS Chain Mount, Car	41	010-70932	1	Sony/Siko Magnetic Strip	73	011-80701	1	3/4 Harden Shaft
18	010-30930A	2	"V" Wheel Mount Plate	42	010-70955	1	4 X 4 Junction Box	74	010-50910	1	1 1/2 Autof
19	011-30931A	1	Sony/Siko Reader Head Mount	43	912-08020	4	1/2-13 X 1 1/2 SHCS	75	011-30922	1	IGUS Rail
20	011-40902B	1	Front Assy. Support	44	912-06040	2	3/8-16 X 2 1/2 SHCS	76	914-04008	4	1/4-20 x 1/4 BHCS
21	011-40903C	1	Rear Assy. Support	45	912-06032	2	3/8-16 X 2 SHCS	77	010-70904	1	IGUS Rail Mounts - Set
22				46	912-06020	2	3/8-16 X 1 1/4 SHCS	78	010-60901	1	Mandrel Clamp Cylinder
23	010-50901	1	Roh'lix Actuator 1-1	47	912-06016	4	3/8-16 X 1 SHCS	79	010-61007	1	Rod Clevis/Nut For Mandrel Clamp Cylinder
	010-50901-3	1	Roh'lix Actuator 3-1	48	912-06132	6	3/8-24 X 2 SHCS	80	912-04012	2	1/4-20 X 3/4 SHCS
24	010-50902	2	Pillow Bearing	49	912-06132	VAR	3/8-24 X 2 SHCS	81	912-04020	4	1/4-20 X 1 1/4 SHCS
25	010-50903	2	Radial Bearing, Insert	50	912-10014	4	5/16-18 X 7/8 SHCS	82	912-03120	2	10-32 X 1 1/4 SHCS
26	010-50904	2	Linear Bearing	51	912-04016	VAR	1/4-20 X 1 SHCS	83	916-03108	1	10-32 X 1/2 SHSS
				52	912-04008	VAR	1/4-20 X 1/2 SHCS	84	912-04008	4	1/4-20 X 1/2 SHCS
				53	912-04020	VAR	1/4-20 X 1 1/4 SHCS	85	912-03124	2	10-32 X 1 1/2 SHCS
				54	912-03116	6	10-32 X 1 SHCS	86	011-30901	1	5/8 X 7/8 X 1 Bushing

CAGE	DWG NO	SH	REV	1
REVISIONS				
ZONE	REV	DESCRIPTION	DATE	APPROVED



AB SERVO PACKAGE		F-3 POSI - FEED CORE ADVANCE ASSEMBLY		
DRAWN J. A. H.	SIZE D	CAGE CODE	DWG NO 011-009040-AB	REV
CHECKED	SCALE 1/3	RELEASE DATE 4-30-2002	SHEET	