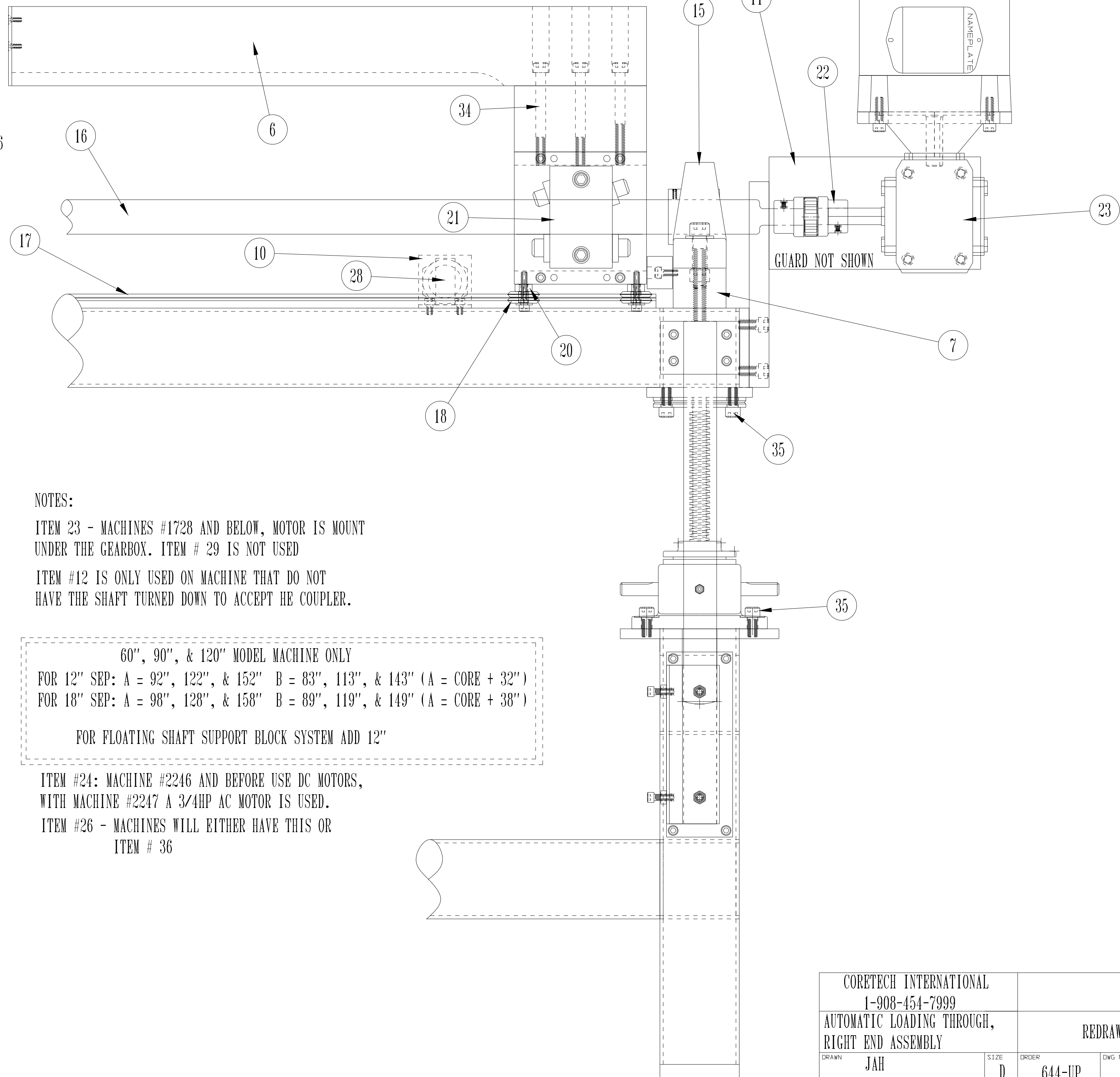
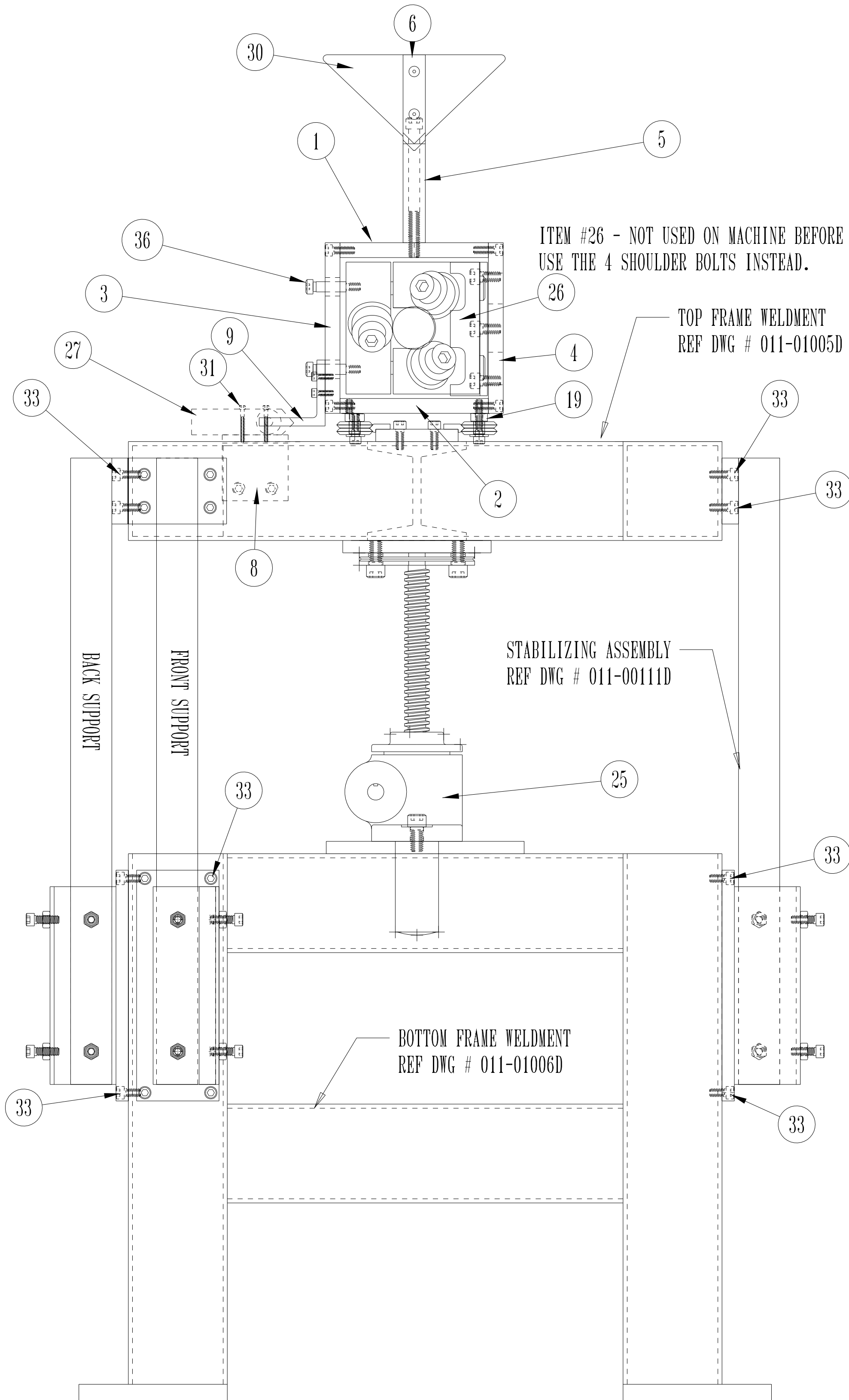


Item	DWG/Part#	REQ	DESCRIPTION	Item	DWG/Part#	REQ	DESCRIPTION	Item	DWG/Part#	REQ	DESCRIPTION	Item	DWG/Part#	REQ	DESCRIPTION				
1	011-31031B	1	CORE LOAD CARRIAGE TOP PLATE	11	011-41031C	1	GEAR REDUCER MOUNT	21	011-51015	1	ROH'LIX ZERO MAX #5144 Z/W 3" LEAD	31	912-01024	4	6-32 X 1 1/2" SHCS	36	915-04012	4	1/4-20 X 3/4" SHOULDER BOLT
2	011-31032B	1	CORE LOAD CARRIAGE BOTTOM PLATE	12	011-30905A	1	SHAFT ADAPTER (NOT SHOWN)	22	011-51016	1 SET	FLEXIBLE COUPLING, F019 x 5/8" & F019 x 1"	32	912-04008	VAR	1/4-20 X 1/2" SHCS				
3	011-31033B	1	CORE LOAD CARRIAGE FRONT PLATE	13	011-41033B	1	COUPLING GUARD (NOT SHOWN)	23	011-51017	1	GEAR REDUCER, GROVE BMQ1133 ASS3 7.5:1	33	912-04009	32	1/4-20 X 9/16 SHCS				
4	011-31034B	1	CORE LOAD CARRIAGE BACK PLATE	14	011-41034C	1	CARRIAGE GUARD (NOT SHOWN)	24	011-51010	1	DC MOTOR, BALDOR CDP3436 (SEE NOTE)	34	912-06056	3	3/8-16 X 3 1/2" SHCS				
5	011-31035B	1	LOADING CARRIAGE SPACER	15	010-50902	1	PILLOW BEARING, SAS-1 1/2"		011-51011	1	AC MOTOR, BALDOR 3/4HP PH3 - 240/480 (SEE NOTE)	35	912-06010	4	3/8-16 X 5/8" SHCS				
6	011-31036B	1	LOADING CARRIAGE PUSHER ARM	16	011-51014	1	HARDENED SHAFT 1 1/2 X "A" (SEE NOTE)	25	011-51018	2	SCREW JACKS, NOOK 2MSJU-8" 24:1								
7	011-31037B	2	PILLOW BEARING RISER	17	011-41037B	1	TWIN RAIL WELDMENT X "B" (SEE NOTE)	26	011-31020B	2	ROH'LIX SUPPORT FOR LOADER (SEE NOTE)								
8	011-31038A	2	MICRO MOUNT	18	010-50920	4	"V" WHEELS, DUAL VEE W2X	27	010-70901	2	LIMIT SWITCH, BZEG-2RN								
9	011-31034A	1	MICRO ADJUST	19	010-50921	2	BUSHING, DUAL VEE B2	28	011-70101	2	PHOTO SENSOR, BANNER SM312D								
10	011-31040A	2	PHOTO SENSOR MOUNT	20	010-50922	2	ECCENTRIC BUSHING, DUAL VEE BX2	29	011-31030A	1	REDUCER SPACER BLOCK (SEE NOTE) (NOT SHOWN)								
								30	011-41036B	1	RAM PUSHER PLATE								



NOTES:
 ITEM 23 - MACHINES #1728 AND BELOW, MOTOR IS MOUNT UNDER THE GEARBOX. ITEM # 29 IS NOT USED
 ITEM #12 IS ONLY USED ON MACHINE THAT DO NOT HAVE THE SHAFT TURNED DOWN TO ACCEPT HE COUPLER.

60", 90", & 120" MODEL MACHINE ONLY
 FOR 12" SEP: A = 92", 122", & 152" B = 83", 113", & 143" (A = CORE + 32")
 FOR 18" SEP: A = 98", 128", & 158" B = 89", 119", & 149" (A = CORE + 38")
 FOR FLOATING SHAFT SUPPORT BLOCK SYSTEM ADD 12"

ITEM #24: MACHINE #2246 AND BEFORE USE DC MOTORS, WITH MACHINE #2247 A 3/4HP AC MOTOR IS USED.
 ITEM #26 - MACHINES WILL EITHER HAVE THIS OR ITEM # 36

CORETECH INTERNATIONAL 1-908-454-7999		REDRAW FROM PRINT DATED 10/88	
AUTOMATIC LOADING THROUGH, RIGHT END ASSEMBLY			
DRAWN JAH	SIZE D	ORDER NO 644-UP	DWG NO 011-00110D
CHECKED CP	SCALE 1/3	RELEASE DATE 12/22/2003	SHEET