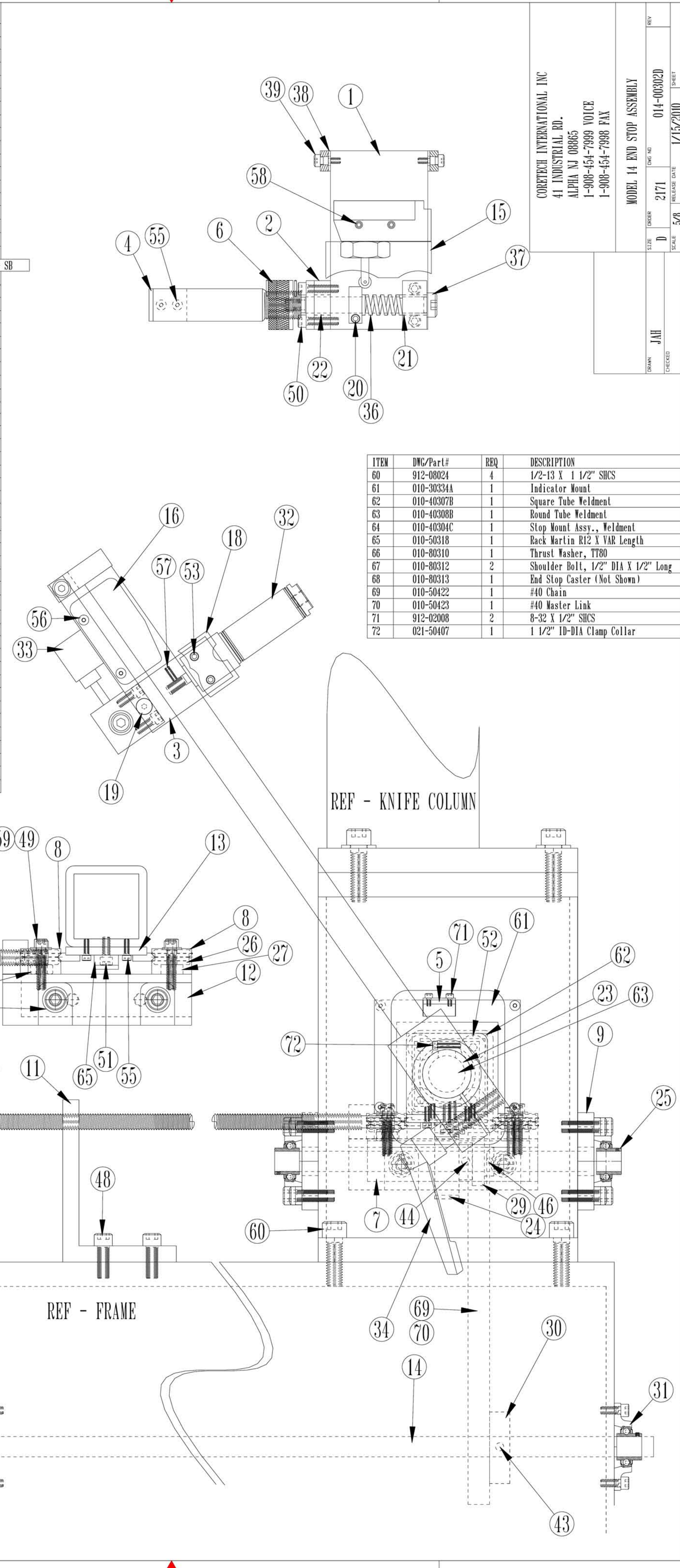


ITEM	DWG/Part#	REQ	DESCRIPTION
1	010-30302B	1	Stop Mounting Plate
2	010-30303B	1 EA	Stop Rod Block, Right & Left
3	010-30304B	1	Stop Assy. Link
4	010-30306A	1	Stop Target
5	010-30309A	1	Indicator
6	010-30311B	1	Micro Adj. Stop Rod
7	010-30330B	1	"V" Wheel Mounting Blocks
8	014-30330B	1 EA.	Clamping Pad, Front & Rear
9	014-30331A	2	Flange Bearing Mounting plate
10	014-30336A	2	Spacer 1/2" ID X 3/4" OD X 1.25" Long
11	014-30333A	1	Clamp Handle Bracket
12	010-40310B	1	Clamp Mounting Angle
13	010-40311C	1	"V" Rail Weldment w/ Hole Layout
14	014-30335A	1	Handwheel Shaft
15	010-40807B	1	Stop Arm Micro Guard
16	010-40808A	1	Right Guard
17	010-40809A	1	Left Guard (Not Shown)
18	010-40810A	1	Stop Arm Cylinder Guard
19	010-50301	1	Cam Follower, 1/2 DIA McGill CFH - 1/2 - SB
20	010-50302	1	Clamp Collar, 1/2" ID
21	010-50305	1	Bushing, RH B810-6
22	010-50306	1	Bushing, LH B810-4
23	010-50308	1	Bushing, B2428-8
24	010-50312	1	Spur Gear, Martin S1224
25	010-50313	2	Flange Bearing
26	010-50315	4	"V" Wheel "DUAL VEE" W2X
27	010-50316	2	"V" Wheel Bushing "DUAL VEE" 2B
28	010-50317	2	Eccen "V" Wheel Bushing "DUAL VEE" 2BX
29	014-50315	1	Sprocket #40 X 11 Tooth
30	014-50316	1	Sprocket #40 X 20 Tooth
31	014-50317	2	Flange Bearing, 1"
32	010-60301	1	Air Cylinder SP4 1/8K1 Allentair
33	010-70301	1	Limit Switch W.S. BZEG-2RQ8
34	010-80302	1	Clamp Handle, GN-300 92 1/2X13 SWL
35	010-80303	1	Clamp Handle, GN-300.92 1/2-13-SW
36	010-80304	1	Spring, .563 ID X .718 OD
37	010-80305	1	Shoulder Bolt, 1/2 DIA X 3 1/2" Long
38	010-80306	2	Thrust Washer, TT604
39	010-80308	2	Shoulder Bolt, 3/8 DIA X 1/2 Long
40	010-80311	1	Handwheel, Kipp 29958
41	010-30337A	1	Threaded Rod
42	014-80313	2	Shoulder Bolt, 1/2" DIA X 1 1/2" Long
43	800-1.440	1	Spring Pin, 1/4" DIA X 2 1/2" Long
44	800-1.428	1	Spring Pin, 1/4" DIA X 1 3/4" Long
45	800-1.432	1	Spring Pin, 1/4" DIA X 2" Long
46	800-1.420	1	Spring Pin, 1/4" DIA X 1 1/4" Long
47	800-3.1612	1	Spring Pin, 3/16" DIA X 3/4" Long
48	912-06116	18	3/8-24 X 1" SHCS
49	912-04020	4	1/4-20 X 1 1/4" SHCS
50	912-04016	2	1/4-20 X 1" SHCS
51	912-04012	VAR	1/4-20 X 3/4" SHCS
52	911-06012	4	3/8-16 X 3/4" FHCS
53	912-03132	2	10-32 X 2" SHCS
54	912-03116	2	10-32 X 1" SHCS
55	912-03108	VAR	10-32 X 1/2" SHCS
56	914-03104	VAR	10-32 X 1/2" BHCS
57	917-03108	1	10-32 X 1/2" SHSS "Brass Tip"
58	912-01024	2	6-32 X 1 1/2" SHCS
59	91W-04WHR	4	Flat Washer - 1/4" Heavy Duty



ITEM	DWG/Part#	REQ	DESCRIPTION
60	912-08024	4	1/2-13 X 1 1/2" SHCS
61	010-30334A	1	Indicator Mount
62	010-40307B	1	Square Tube Weldment
63	010-40308B	1	Round Tube Weldment
64	010-40304C	1	Stop Mount Assy., Weldment
65	010-50318	1	Rack Martin R12 X VAR Length
66	010-80310	1	Thrust Washer, TT80
67	010-80312	2	Shoulder Bolt, 1/2" DIA X 1/2" Long
68	010-80313	1	End Stop Caster (Not Shown)
69	010-50422	1	#40 Chain
70	010-50423	1	#40 Master Link
71	912-02008	2	8-32 X 1/2" SHCS
72	021-50407	1	1 1/2" ID-DIA Clamp Collar

CORETECH INTERNATIONAL INC  
 41 INDUSTRIAL RD.  
 ALPHA NJ 08865  
 1-908-454-7999 VOICE  
 1-908-454-7998 FAX

MODEL 14 END STOP ASSEMBLY

DWG NO. 014-00302D  
 REV. 2171  
 SCALE 5/8  
 RELEASE DATE 1/15/2010

DRAWN JAH  
 CHECKED