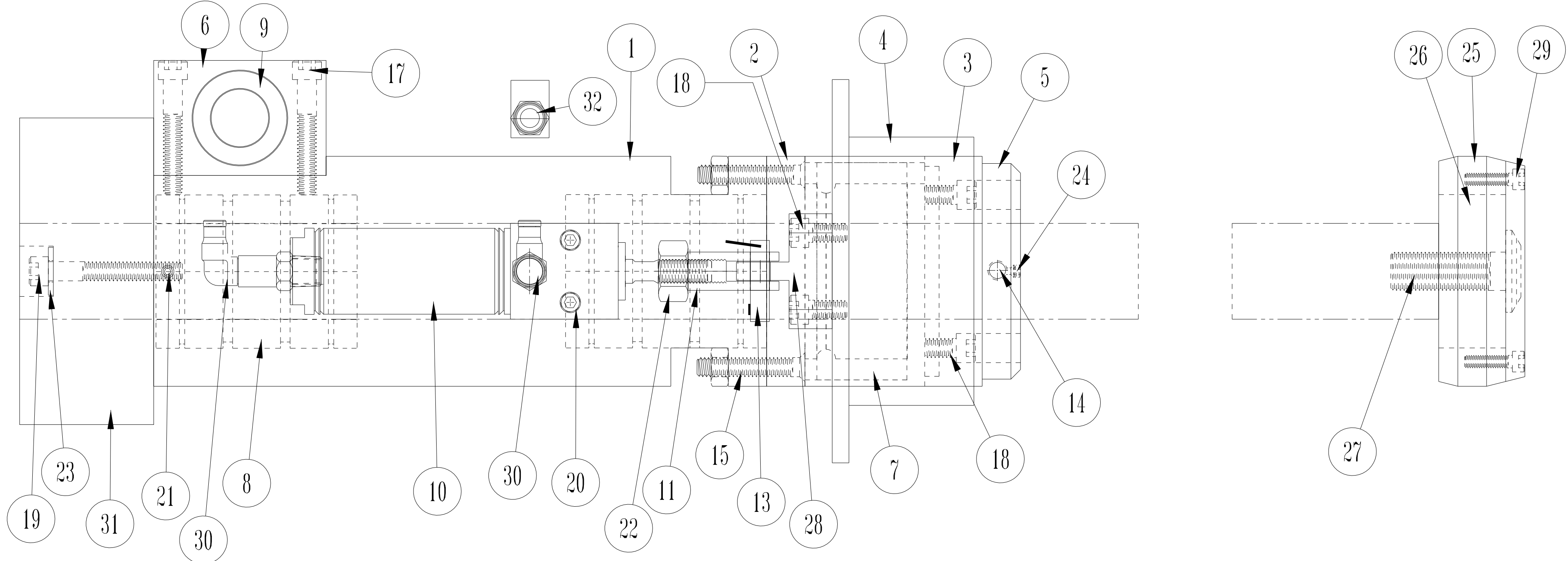


Item	DWG/Part#	REQ	DESCRIPTION	Item	DWG/Part#	REQ	DESCRIPTION	Item	DWG/Part#	REQ	DESCRIPTION
1	011-30701C	1	Trim Eject Body	17	912-04024	2	1/4-20 X 1 1/2" SHCS	32	010-60000	2	1/8" NPT-M X 1/4" Air Line
2	011-30702B	1	Repairable Bearing Mount	18	912-04008	6	1/4-20 X 1/2" SHCS	33	010-60002	1	1/4" Air Line
3	011-30751B	1	Bearing Cap	19	912-04032	1	1/4-20 X 2" SHCS				
4	011-30752	VAR	Trim Eject Ring - Spec. Size	20	912-03124	4	10-32 X 1 1/2" SHCS				
5	011-30750B	VAR	Core Chuck	21	916-03108	1	10-32 X 1/2" SHSS				
6	010-30917A	1	Pusher Link Bearing Mount	22	913-040HN	2	Hex Nut 1/4-20				
7	010-50701	1	Bearing, INA NK1B5910X	23	91W-04WHR	1	1/4" ID X 1/8" Thick Washer				
8	011-50703	2	Linear Bearing LM-20-MM - 1 1/4 Mandrel Shaft	24	918-04006	VAR	10-32 X 1/2" Nylon Tip Set Screw				
	011-50915	2	Linear Bearing LM-12-MM - 3/4" Mandrel Shaft	25	010-30705	VAR	Anvil - Spec. Size				
9	010-50915	1	Linear Bearing - LM-12-MM	26	010-50702	1	Anvil Bearing				
10	010-61006	2	Cylinder w/ Magnet	27	010-80505	1	Anvil Bolt				
11	010-61007	2	Rod Clevis - Binba D-166-1	28	011-30754A	VAR	Trim Eject Clevis Block				
12	010-61010	2	Reed Switch, Binba MRS-087-B-31	29	912-04016	4	10-32 X 1" SHCS				
13	010-81001	2	Quick Release Pins	30	010-60001	4	1/8 NPT-M X 1/4" Fitting 90° Swivel				
14	010-80701	VAR	Ball Plungers	31	010-30920-20	1	1 1/4 Mandrel Clamp Assy.				
15	77-20-125-13	2	Threaded Stud		010-30920-12	1	3/4" Mandrel Clamp Assy.				
16	010-60701	1	Muffler								



CORETECH INTERNATIONAL
 1-908-454-7999
 REDRAWN FROM PRINT OF SAME #, DATED 12-10-91

CONTRACT NO		TITLE	
APPROVALS	DATE	TRIM EJECT PUSHER ASSY.	
DRAWN JAH	9/2002	SIZE	CAGE CODE
CHECKED		OWG NO	REV
DESIGNER CAP	6-18-1984	011-01050C	
APPROVED		SCALE FULL	RELEASE DATE 9/11/02
		WEIGHT	SHEET